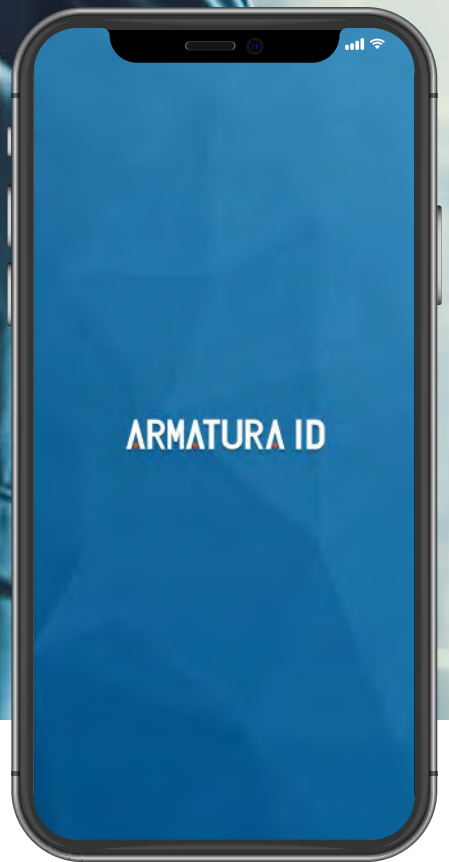




Mobile Credential Solution

The AMARTURA Mobile Credential Solution enables smart devices like smartphones and smart devices as credential for convenient access, without needing physical cards anymore. Multiple functions such as Card Mode, Remote Mode, and QR code Mode gives users the ability to choose the best option to optimize their access control experience.

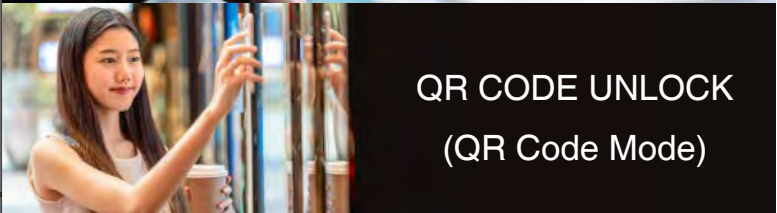
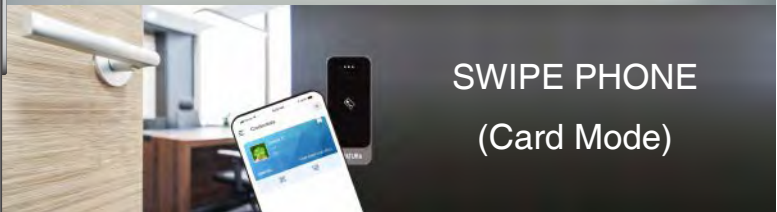
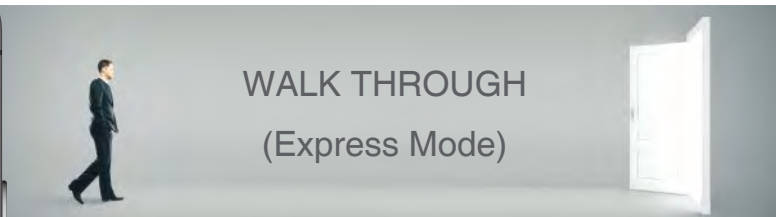
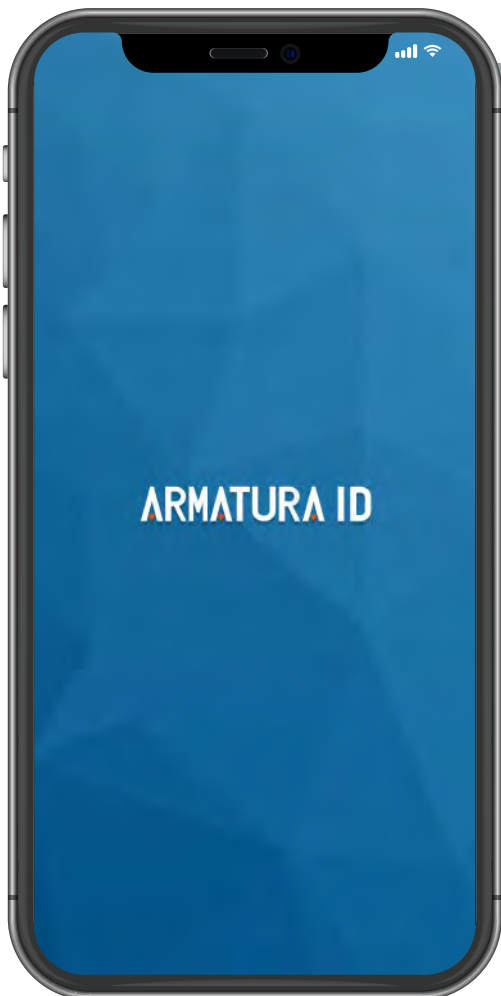


ARMATURA



What is a mobile credential solution?

As user friendliness and convenience of user experience are more emphasized than ever, ARMATURA devices accept mobile devices like smart-phones and smart devices to act as a credential BT enabled readers to access specific secured areas, offices and other business facilities. It enables enterprises to have comprehensive identity authentication at access points and reduces material consumption for physical RFID cards.





Advantages of the ARMATURA mobile credential



- Enhanced convenience

Enhanced convenience using your smartphone as a credential eliminates the need for physical cards.



- Prevention of lost card

Eliminates the possibility of losing access cards since users are less likely to lose their phone.



- Eco-Friendly

With the digitalized credential, no physical card is needed anymore to purchase, issue, re-issue and replace. The cost of mobile credential for users are economic for different applications available.



- Enhanced security level

Compared to a conventional access card, a smartphone is one of the most secured devices in the market with its higher end encryption and requiring a passcode, face or fingerprint to unlock makes it almost impossible to clone.



How does mobile mobile credential work?

In the past, access control is generally operated with physical RFID technology. The ARMATURA Access control solution is powered by BLE (Bluetooth Low Energy) with our ARMATURA ID app installed on the mobile devices, it enables users to open doors with their smartphones and smart devices.



Compatible Devices

The mobile credential solution offers users experiences of mobile unlocking any security and access control device with a wearable smart devices, android and iOS device in any premises such as offices and other places where an electronic door lock or electronic lock is installed.



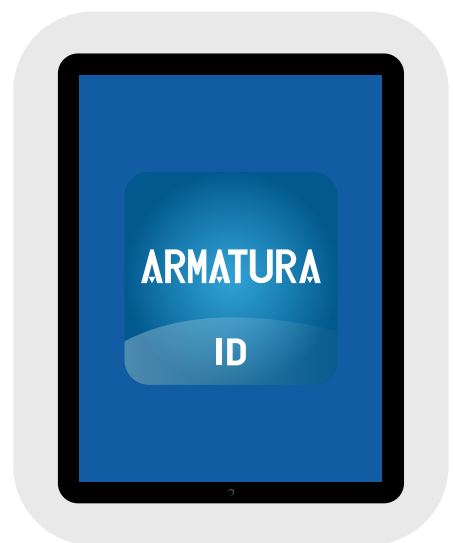
Wearable smart devices
(Coming Soon)



Android phone



iPhone (iOS)



iOS/ Android tablet



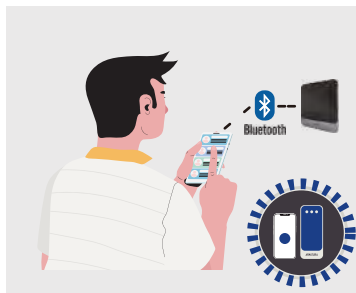


Supported Access Modes

ARMATURA's access control solution includes "Bluetooth Low Energy (BLE)", Near Field Communication (NFC) technology and QR code.

There are 4 types of access method for users to access through doors:

- 1) Card Mode
- 2) Remote Mode
- 3) QR Code Mode
- 4) Express Mode (coming soon)



Remote Mode

Open doors remotely by clicking a virtual button in the mobile app



QR Code Mode

Present your QR Code and get access



Card Mode

Place your smartphone over the reader like you would a physical access card



Express Mode

Runs in the background for fully automated door access



CARD MODE

Card mode

Card mode utilizes mobile phones to function as a user's credential to enter offices or other business facilities. In card mode, simply present your smartphone to the reader to gain access.

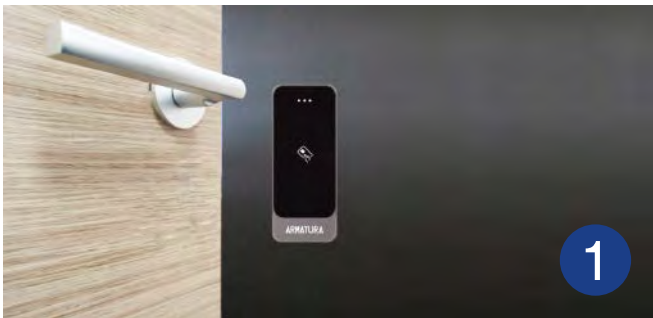


Bluetooth™

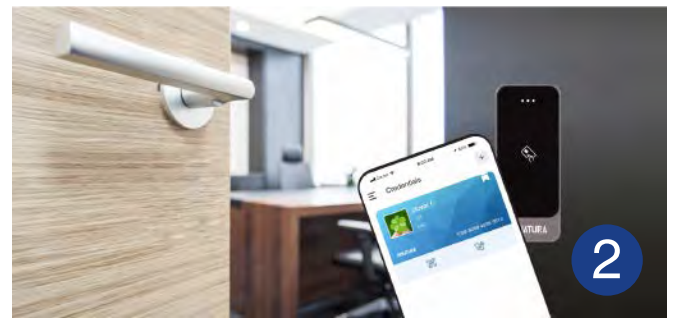
NFC



How to use



1



2

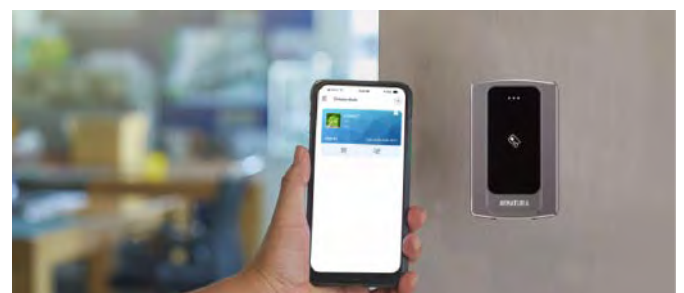
Present your smartphone to the Armatura BT enabled reader.

Features

Application



Conventional physical card swiping from a distance of 3.5cm/ 1.4" to 10cm/ 4".



FRONT DOOR (EMPLOYEE)

Users could simply present your smartphone to the reader to gain access.



REMOTE MODE

Remote Mode (BLE)

Remote mode offers users the experience of remotely unlocking any ARMATURA access control device by clicking or pressing the button in the Armatura ID mobile app for long distance access in mobile (Android/ iOS) device, it satisfies the needs of long-distance operation.

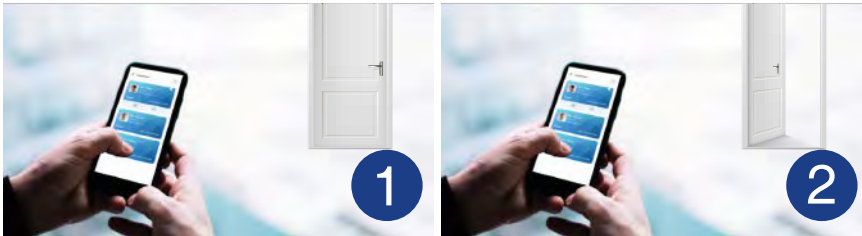


Bluetooth™

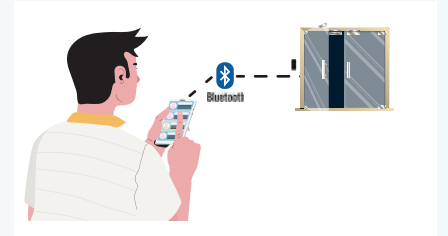
NFC

How to use

Features



User presses the button shown on the mobile app to open the door



Remote Open Door

Application



FRONT DOOR (EMPLOYEE)

Supports remote unlocking from within range of the BT enabled device.



QR CODE MODE

QR code mode

The ARMATURA ID mobile app provides QR Code credentials as an option to open doors with ARMATURA readers.

With QR codes replacing conventional physical keys, visitors are enabled to access designated area by scanning their QR codes.



How to use

Application



1



2

User only needs to open the AMARTURA ID App. And show the QR code to the access control devices or readers, the access control devices automatically scan the codes for verification and give access to the secured areas.



FRONT DOOR (EMPLOYEE)

Offers QR Code based Identification for staff. It marks their attendance and opens door when a user presents the QR Code at the door.

Features



It takes less than 0.2 seconds for accurate verification and access to secured areas.



QR Code will be automatically changed every 30 seconds, preventing non-registered people from sending or sharing codes to unauthorized users.



Protected by AES-256 standard encryption which has a key length of 256 bits and supports the largest bit size with the strongest encryption standard.



EXPRESS MODE



Express mode (Coming soon)

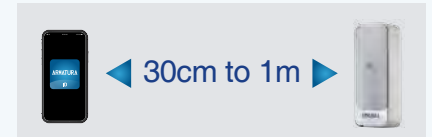
Express mode offers a contactless experience for users to walk through without pressing any button or presenting a mobile device at the door. The door is automatically unlocked after receiving a signal from a mobile device (30cm to 1m).

How to use



When in a proximity of 30cm to 1m from the reader, the signal will be sent and open the door

Feature



ARMATURA provides long range communication between access control & mobile devices.

Application



FRONT DOOR (EMPLOYEE)

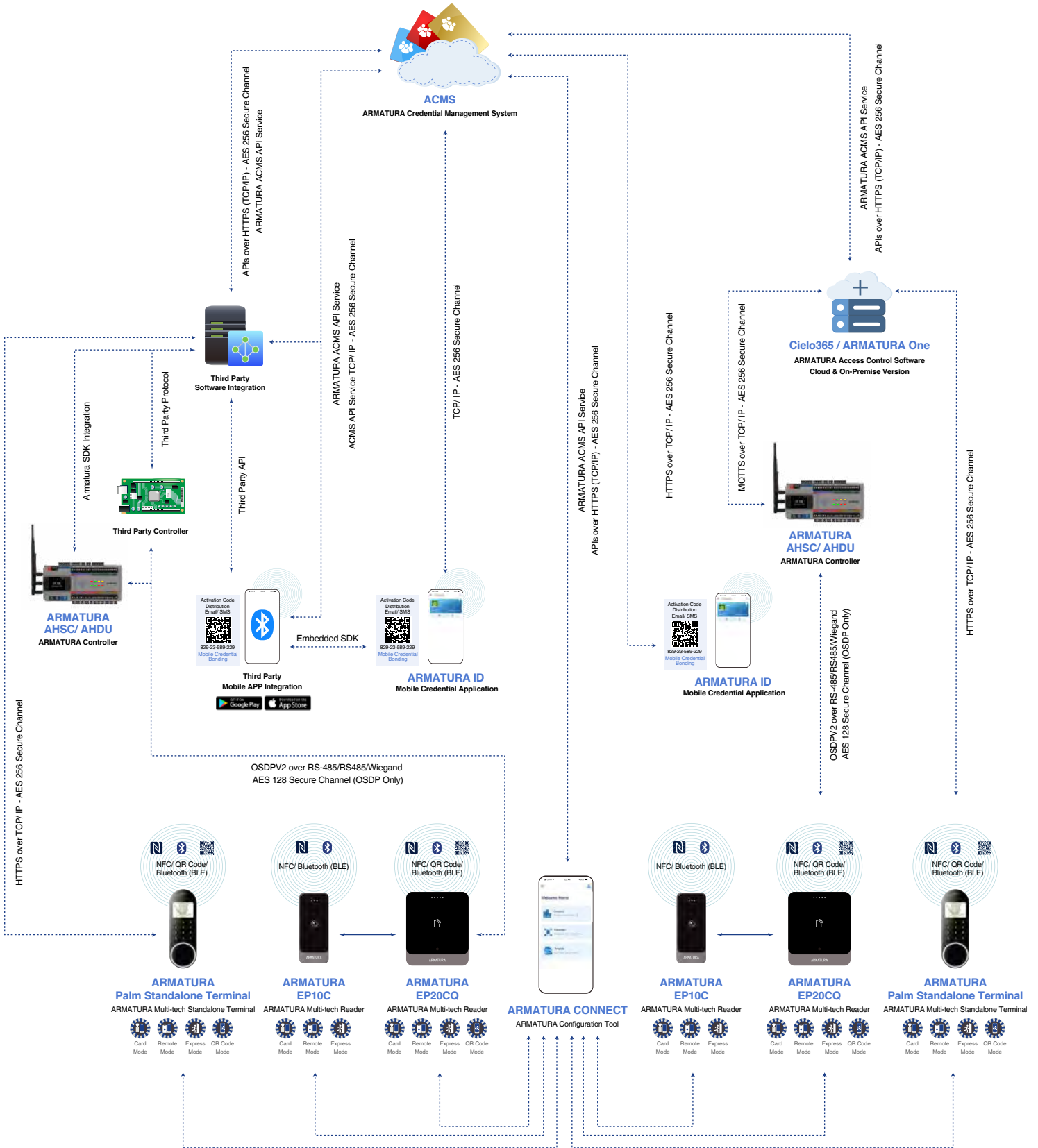
The advantage of a contactless experience allows users to effortlessly enter a door if their hands are already occupied.



Medical's Control Area

Access points & doors are some of the most vulnerable areas in medical facilities when it comes to the spread of germs. Express Mode allows contactless access and reduces the risk of contact with infected surfaces

Mobile Credential Topology



Compatible Products

Explorer Series - EP10C

All Weather Outdoor Multi-tech Smart Reader

- Advanced Cybersecurity Design
- Supporting 100+ RFID types



Exploer Series - EP20 Series

All Weather Outdoor Multi-tech Smart Reader

- Advanced cybersecurity design
- Supporting 100+ RFID types
- Touch keypad



ACSC-1000

IP-Based Security Core

- Ultimate Authentication performance
- Scalable and Extendable
- Global Functionality based on peer-to-peer communication
- Robust Cyber Security Level



ACDU Series

IP-Based Biometric Security Core

- Ultimate authentication performance
- PoE and 3rd Party Integration
- Threat Levels and Port Failover
- Advanced Access Control Function
- Supervised Inputs and NC / NO Configurable Ports



ARMATURA Product Applications

Armatura solutions are a great fit for any situation which prevents staff or patients from touching door handle surfaces. This solution has been widely used in many practical scenarios including: hospitals, schools, factories, malls, public transportation, banks, small to large enterprises, and more.



Hospitals



Educational Institutes



Factories



Construction Sites



Shopping Malls



IT Parks



Public Transportation



Business Organizations



Small to Medium Enterprises



Banks



Government Organizations